

Pro-6-Lite

AX3000 Wi-Fi6 Dual-Band Access Point

Pro-6-Lite

AX3000 Wi-Fi6 Dual-Band Access Point

Products Description

Pro-6-Lite is a 2x2 Wi-Fi 6 access point which offers an up to 3 Gbps aggregate wireless rate with both the 2.4 GHz and 5 GHz bands. With the application of OFDMA, DL/UL MU-MIMO, and SR (Spatial Reuse), its system capacity has been greatly increased compared with that with 802.11ac. In addition, with the TWT technology, Pro-6-Lite can centrally schedule awakening and sleeping of clients, reducing client conflicts and unnecessary awakenings, and therefore can be used in densely-populated scenarios where large quantities of concurrent access are required.



Key Feature

- OFDMA and Uplink & Downlink MU-MIMO
- 2.4 GHz Band up to 574 Mbps
- 5 GHz Band up to 2402 Mbps
- Range of up to 180 Meters

Product Features



3 Gbps Wi-Fi

Both the 2.4 GHz and the 5 GHz radio bands support the new Wi-Fi 6 standard and the concurrent Wi-Fi rate is as high as 3 Gbps.



Higher capacity

Supporting OFDMA, SR, and MU-MIMO, 802.11ax greatly improves the system capacity compared with the last generation 802.11ac. With the TWT technology, AP can uniformly schedule the waking and sleep of clients, significantly reducing client conflicts and unnecessary wakeups, and therefore is suitable for high-density crowd scenarios where large numbers of clients are deployed.



More than 20% wider Wi-Fi coverage

With the long OFDM symbol transmission mechanism and 2 MHz narrowband transmission, the 802.11ax protocol significantly reduces packet loss rate and noise interference, and improves the receiving sensitivity of clients.

Product Features



Strong anti-interference capability

Supporting BSS coloring, dynamic CCA threshold and power control, the 802.11ax protocol significantly reduces the channel interference in high-density scenarios and improves the utilization rate of spectrum resources, improving the anti-interference capability compared with 802.11ac.



Higher security

The Wi-Fi 6 AP supports the new-generation WPA3 Wi-Fi encryption protocol. Under the WPA3 encryption protocol, even the simple password cannot be cracked, greatly enhancing the security of Wi-Fi networks.



Intelligent roaming protocol

Supporting the intelligent roaming technology based on the 802.11kv protocol, Pro-6-LITE enables wireless clients to automatically connect to AP with a better signal, effectively enhancing the user experience.



Standard PoE supported, easy installation and deployment

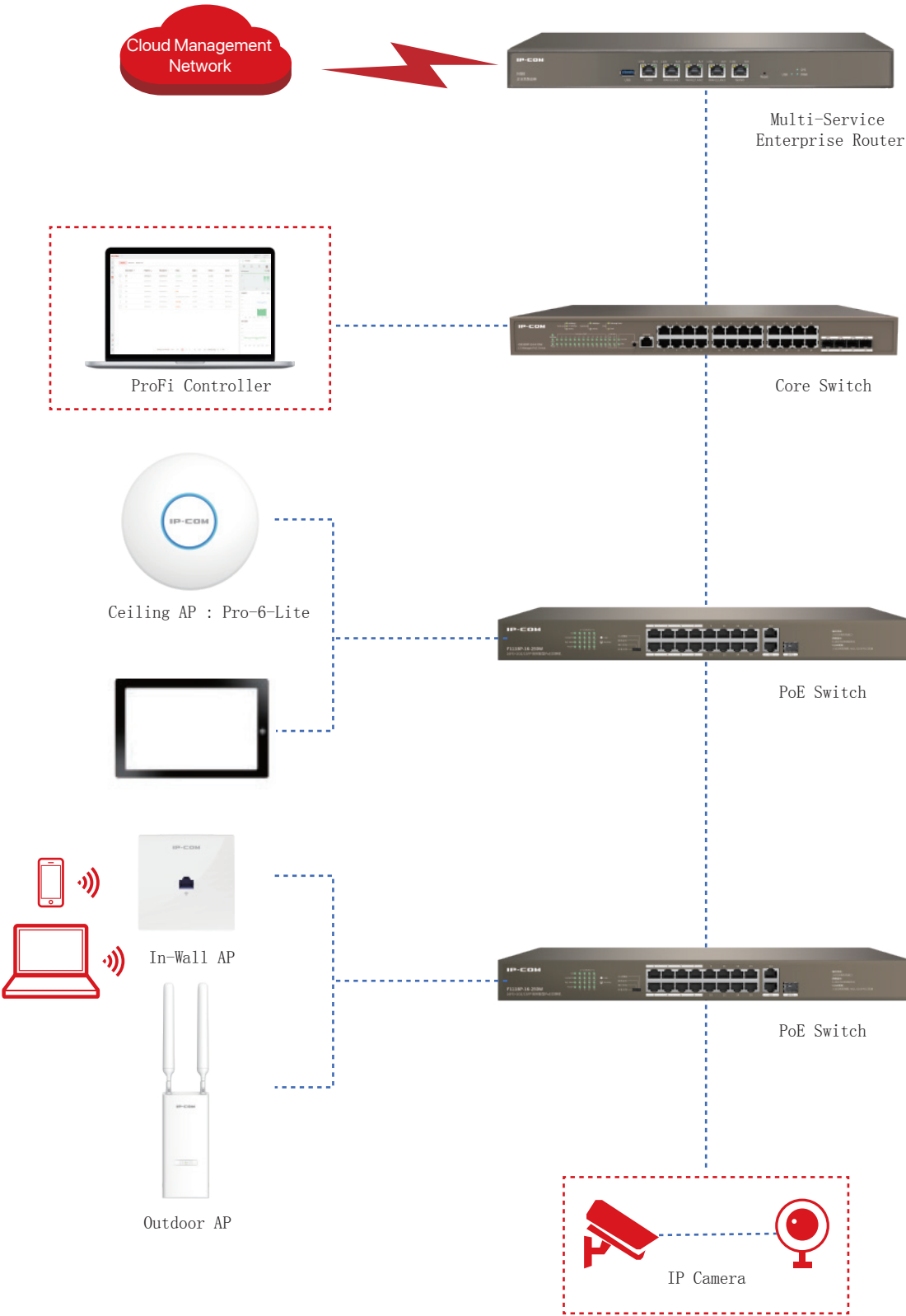
The efficient components and excellent hardware design guarantee the standard 802.3at power supply to 802.11ax dual-band gigabit AP, making installation and deployment simpler.



Centralized management

The ProFi Controller makes it easy to manage and monitor the whole ProFi series in a real-time manner and cloud services enable a remote and secure access free from the restrictions of device location.

Application Scenarios



Specifications

Product Information

Model	Pro-6-Lite
Category	Ceiling/Wall
Dimensions	Φ176*43.5 mm

Hardware Specifications

Frequency band	2.4 GHz, 5 GHz
Wireless standards	IEEE 802.11a/b/g/n/ac/ax
2.4 GHz data rate	1-574 Mbps
5 GHz data rate	6-2402 Mbps
Channel width	20 MHz/40 MHz/80 MHz/160 MHz
MU-MIMO	2X2 MU-MIMO
Ethernet port	1*10/100/1000 Mbps Ethernet Port (PoE)
Button	1*Reset
LED indicator	RGB
Max. power consumption	≤ 15W
Power supply standard	IEEE 802.3at PoE
Concurrent clients	254
Antenna gain	2*4 dBi
2.4 GHz Max. output power	27+/-1.5 dBm
5 GHz Max. output power	26+/-1.5 dBm
802.11b RX sensitivity	-99 dBm
2.4 GHz 802.11n (MCS7) RX sensitivity	-78 dBm
5 GHz 802.11a RX sensitivity	-97 dBm
5 GHz 802.11n (MCS7) RX sensitivity	-77 dBm

Software Specifications

Operating mode	AP
Hide SSID	Supported
Max. No. of SSID	2.4 GHz: 8 5 GHz: 4
OFDMA	Supported
Beamforming	Supported
TWT	Supported

Specifications

802.11 k/v	Supported
WEP	Supported
WPA-PSK	AES/TKIP
WPA2-PSK	AES/TKIP
WPA3-ASE	AES
WPA	Supported
WPA2	Supported
Access control	MAC address-based
Adjustable power transmit	Supported
Frequency analysis	Supported
AP isolation	Supported
Connected clients control	Supported
RSSI threshold	Supported
VLAN tagging for SSID	Supported
LED indicator control	Supported
Diagnostics tool	Ping, Traceroute
Scheduled reboot	Supported
Reboot at specified interval	Supported
System logs	Supported
Firmware upgrade	Supported
Reboot	Supported
Firmware upgrade	Supported
Backup configuration	Supported
Restore configuration	Supported
Operating Environment	
Default login IP address	192.168.0.254
Default user name	admin
Default password	admin
Operating temperature	-10°C - 40°C
Operating humidity	(10% - 90%) RH, non-condensing
Storage temperature	-30°C - 70°C
Storage humidity	(10% - 90%) RH, non-condensing

IP-COM
World Wide Wireless

IP-COM NETWORKS CO.,LTD.

Tower E3, No.1001, Zhongshanyuan Road,
Nanshan District, Shenzhen, China. 518052

Service: info@ip-com.com.cn

Inquiry: marketing@ip-com.com.cn

Tel: +86-755-27653089